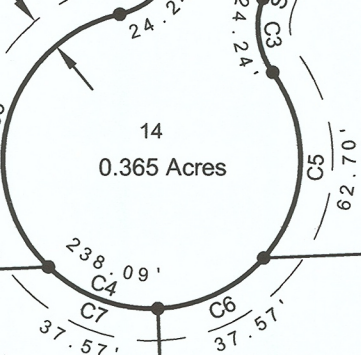


N.C.B. 1660-M

N.C.B.

Lakeside
Cabi



14
0.365 Acres

N 87°40'07" E 285.85'

S 02°19'53" E 389.00'

16
1.459 Acres

200.00'

10' Wide Drainage Easement
Dedication By This Plat

N 02°19'53" W 185.63'

S 87°40'07" W 638.93'

319.46'

Called 15.0 Acres
Estate of Alton Wesley Buck

To
George W. Woodcock
Volume 2210, Page 301